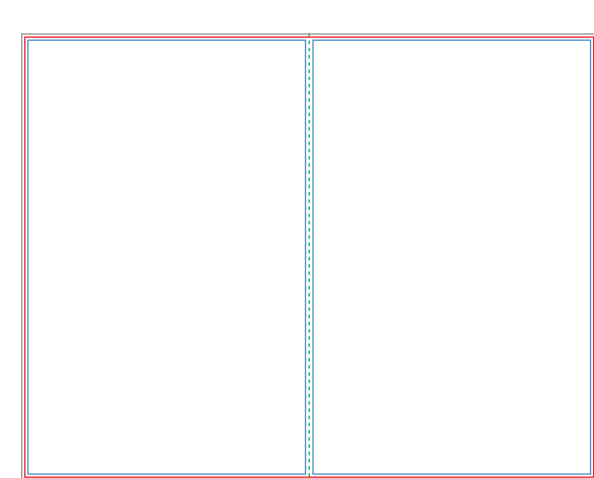


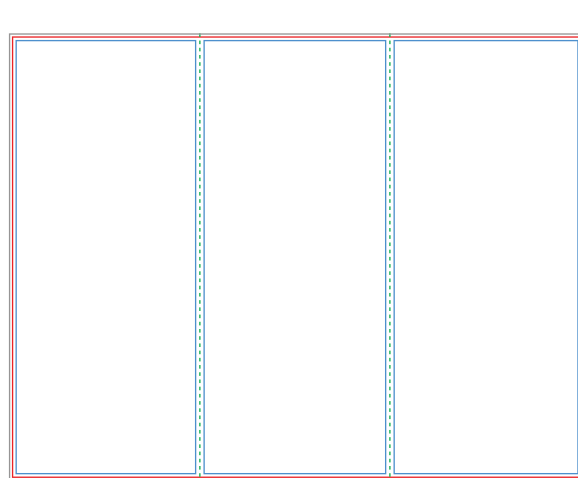
BROCHURE SIZES



11" x 8.5" Bi-fold brochure
Standard glossy

Document Trim Size
10.98" x 8.50"
279 x 216 mm
3294 x 2550 pixels

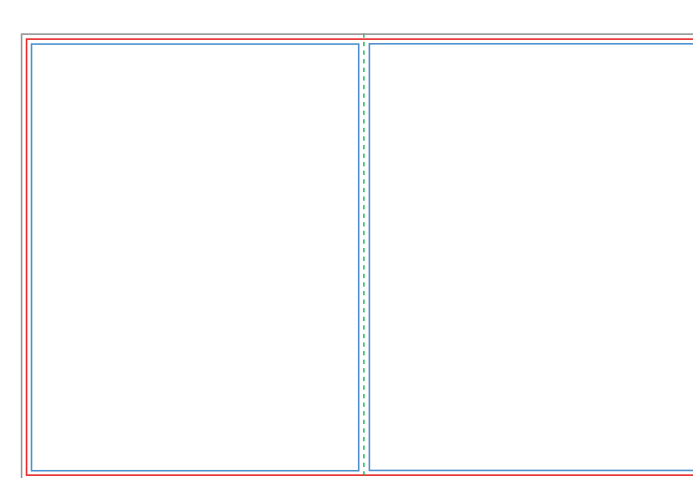
Full Bleed Size
11.10" x 8.62"
282 x 219 mm
3329 x 2585 pixels



8.5" x 11" Tri-fold brochure
Standard glossy

Document Trim Size
10.98" x 8.50"
279 x 216 mm
3295 x 2551 pixels

Full Bleed Size
11.10" x 8.62"
282 x 219 mm
3331 x 2587 pixels

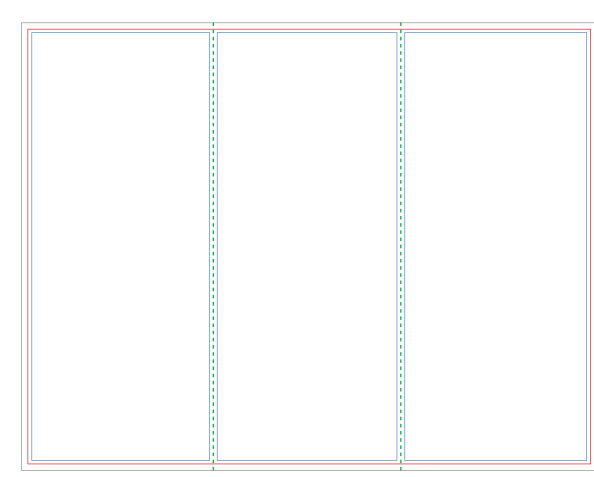


17" x 11" Bi-fold brochure
Standard glossy

Document Trim Size
17.00" x 11.00"
432 x 279 mm
5100 x 3300 pixels

Full Bleed Size
17.25" x 11.25"
438 x 286 mm
5175 x 3375 pixels

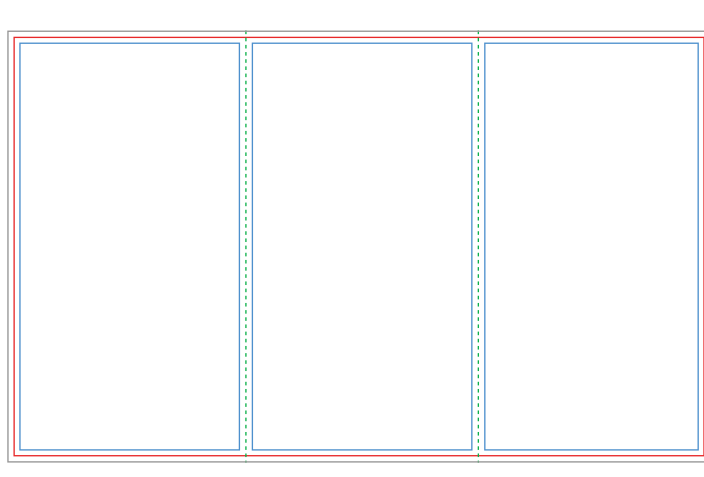
bleed line cut line margins fold



11" x 8.5" Z-fold brochure
Standard glossy

Document Trim Size
11.00" x 8.50"
279 x 216 mm
3300 x 2550 pixels

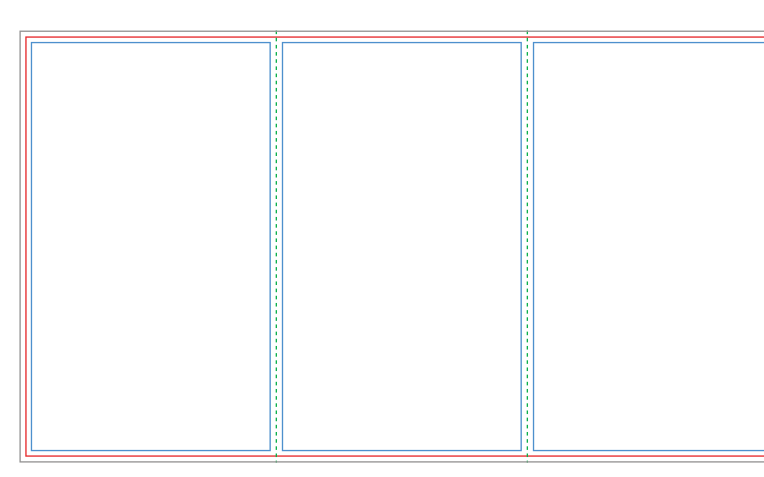
Full Bleed Size
11.25" x 8.75"
286 x 222 mm
3375 x 2625 pixels



14" x 8.5" Tri-fold brochure
Standard glossy

Document Trim Size
14.00" x 8.50"
356 x 216 mm
4200 x 2550 pixels

Full Bleed Size
14.25" x 8.75"
362 x 222 mm
4275 x 2625 pixels

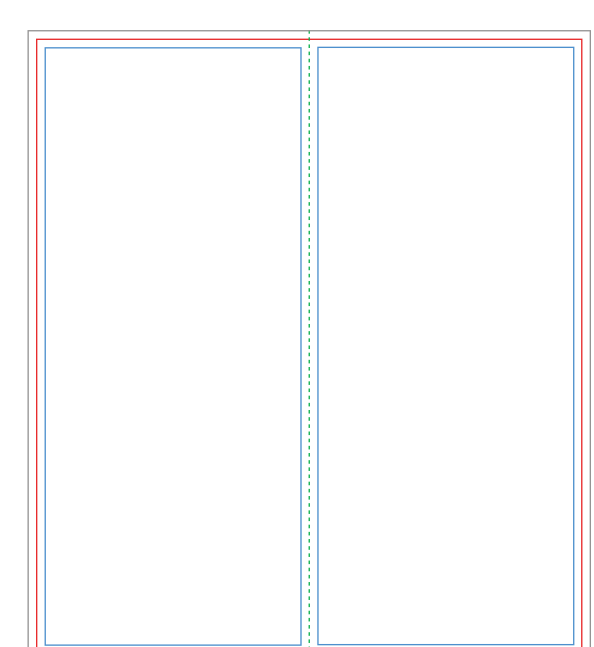


16" x 9" Tri-fold brochure
Standard glossy

Document Trim Size
16.00" x 9.00"
406 x 229 mm
4800 x 2700 pixels

Full Bleed Size
16.25" x 9.25"
413 x 235 mm
4875 x 2775 pixels

bleed line cut line margins fold



8" x 9" Bi-fold brochure
Standard glossy

Document Trim Size
8.00" x 9.00"
203 x 229 mm
2400 x 2700 pixels

Full Bleed Size
8.25" x 9.25"
210 x 235 mm
2475 x 2775 pixels

bleed line cut line margins fold

TIPS FOR GREAT UPLOADS

01 TRIM, BLEED AND MARGINS

Trim

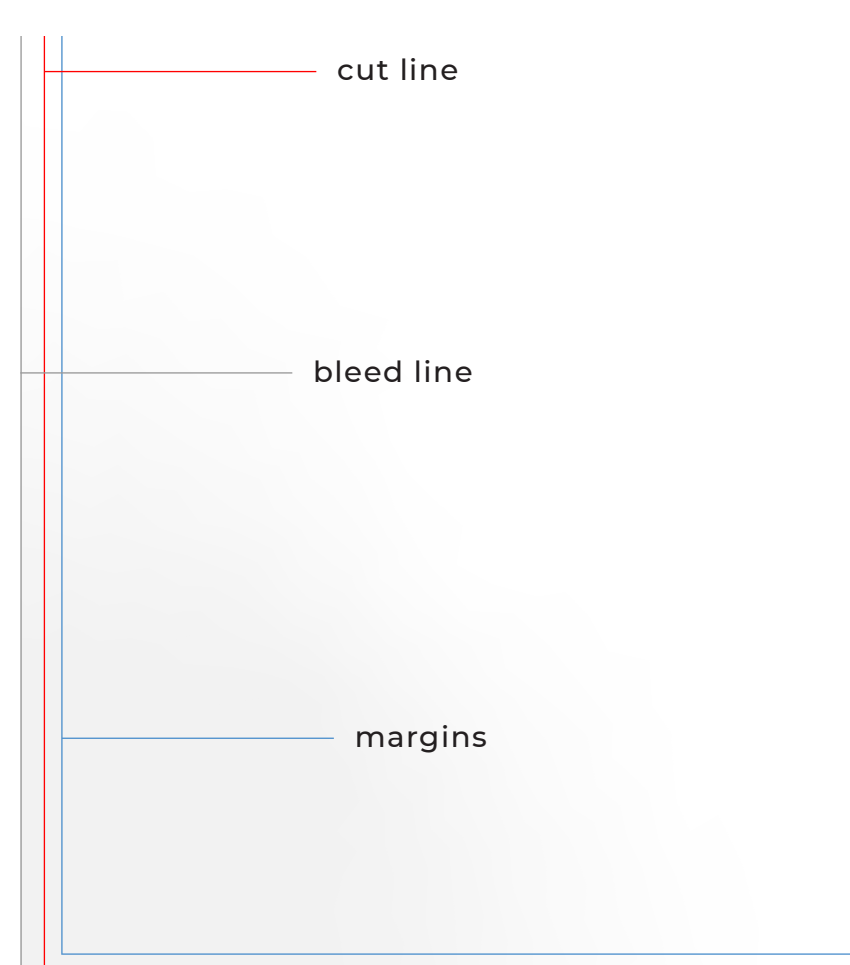
Trim lines are the finished size of the document. The document is cut close to the trim line, but because of the mechanical tolerances involved in printing, the actual cut can happen anywhere between the bleeds and the safe margin. This is why it is important to keep your text and important images within the safe margin.

Bleed

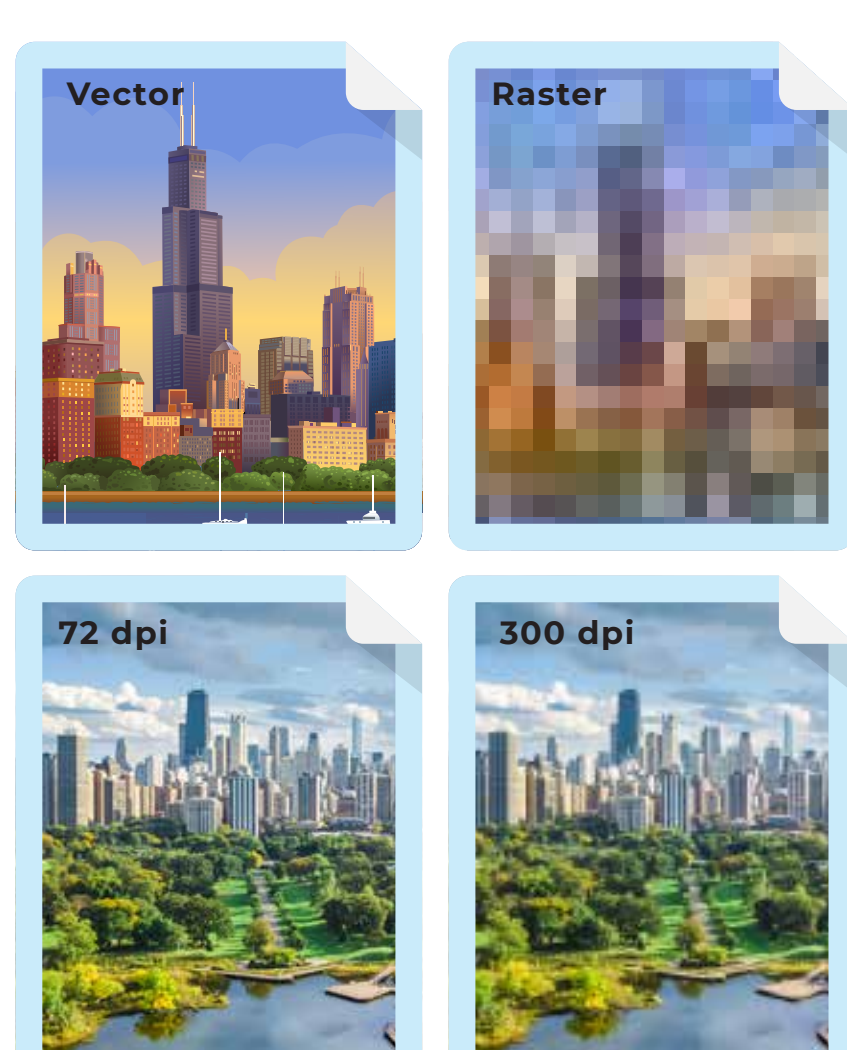
The very edges of the document are called the bleed area. To prevent an unwanted white border from showing at the edge of your document, be sure to extend any background colors or design elements all the way to the edge. It is desirable that the size of the bleed be .0587" from each side, regardless of the dimensions of the product.

Safe area / Margins

Please remember to keep all important information, like names, addresses, phone numbers or logos at least .137" from the edge, within the safe margin (represented by the blue line) to ensure that they aren't cut off when your document is trimmed.



02 RESOLUTION



What is resolution?

Resolution refers to the number of dots per inch (dpi), or the amount of detail the image has. Most documents prepared for upload should be 300 dpi at 100% of the final print size. Higher resolution means a more detailed image, and also larger file and longer upload time.

Use Vector Art

When possible, use vector graphics created in a desktop publishing program. Vector images are different from photos because they use mathematical equations to define each component of the image. Vector graphics retain high image quality at any size.

Images

Any image you plan to use must be saved at approximately 300-dpi at 100% output size for the very best printing results. It's helpful to know that shrinking an image on a product will increase its resolution. For example, an image captured at 600 x 900 pixels has 150-dpi at 4" x 6". However, it can be printed at 300-dpi by reducing its dimensions on the product to 2" x 3".

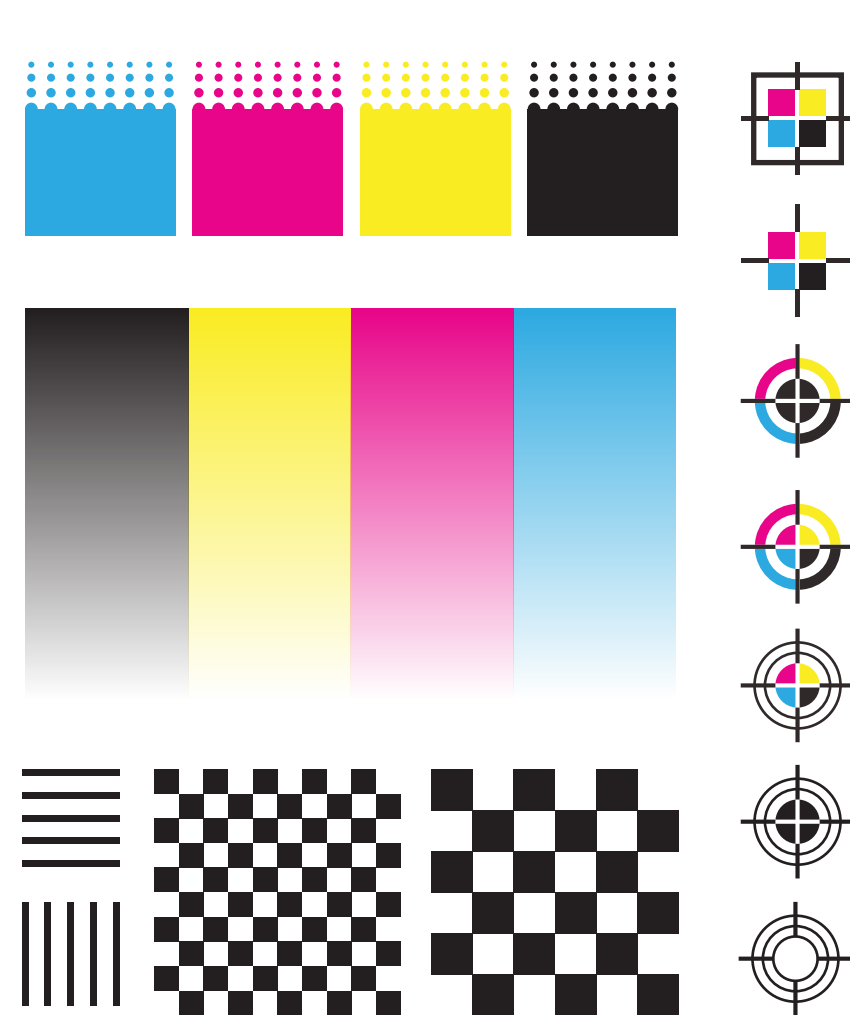
03 DESIGN IN CMYK

Since computer monitors use a different color definition (RGB) than that used by professional printers (CMYK), you should convert your document to use the CMYK color definition to achieve the most accurate color results. If your software allows, use "CMYK: Web Coated (SWOP) V2" to see the most accurate representation of the final printed colors.

CMYK vs. RGB

CMYK (Cyan, Magenta, Yellow and Black) are the colors used in the printing process, whereas RGB (Red, Green and Blue) are the colors used by screens displays such as your monitor. Please note that JPEG files are almost always in RGB.

Your document should be created in CMYK mode so that the colors that you see on the screen most closely match the final printed product. If you create your document in RGB, the colors in your printed product may vary slightly. Many of the bright values produced by your monitor cannot be reproduced in print.



04 CONVERTING FONTS TO OUTLINES

Outline

* Changeable text

Outline

* Outlined - Text converted to curves

Text can be converted to outlines (paths) in some graphics programs. This will fix upload errors that result when fonts cannot be embedded in your file.

How to convert fonts to outlines in Adobe Illustrator?

1. Select all text.
2. Click Type Menu> Type> Create Outlines
3. Text now has a blue outline.
4. Save a copy and re-upload.

